

HAUS 1

A place for creators,
originators and change
makers to thrive.



ATELIER GARDENS

1,747 sq m
of beautifully
adaptable
workspace at
Atelier Gardens
in Berlin.





Atelier Gardens is a 6-acre 100 year old film campus which has been transformed into a campus for the pioneers of change.

Situated at the centre of the Atelier Gardens campus, **HAUS 1** is being refurbished into a design-led and sustainable workspace for the future.

HAUS 1

ATELIER GARDENS

Working together for a **future society.**

Atelier Gardens is the global home for the pioneers of profound societal change.

The 23,800 sq m site is being adapted to reuse existing film studio structures and ecologically transform the landscape, revolutionising the future of farming, food, finance, film, leadership and education.

Our spaces are flexible, beautiful, brimming with nature and facilitate the work of the dynamic individuals and inspiring organisations that inhabit them.



CAMPUS GARDENS AT ATELIER GARDENS



TON 1, EVENT SPACE

A growing and diverse community.

tiny farms

BLG Bundesverband der gemeinnützigen Landesgesellschaften

STADT BIENEN

netzwerk

NAHhaft natürlich nachhaltig

Libellulafilm

NETZWERK Plurale Ökonomik

benso

TRANSFORMATION HAUS UND FELD

extinction rebellion

Die Fliegende Bühne The Pigeon Theater

KAOSPILOT+ BERLIN

TINY FOUNDATION

THINKFARM BERLIN

JUMEN Menschenrechte in Deutschland

WECHANGE

lernlabor

SUPER MARKT

streampark

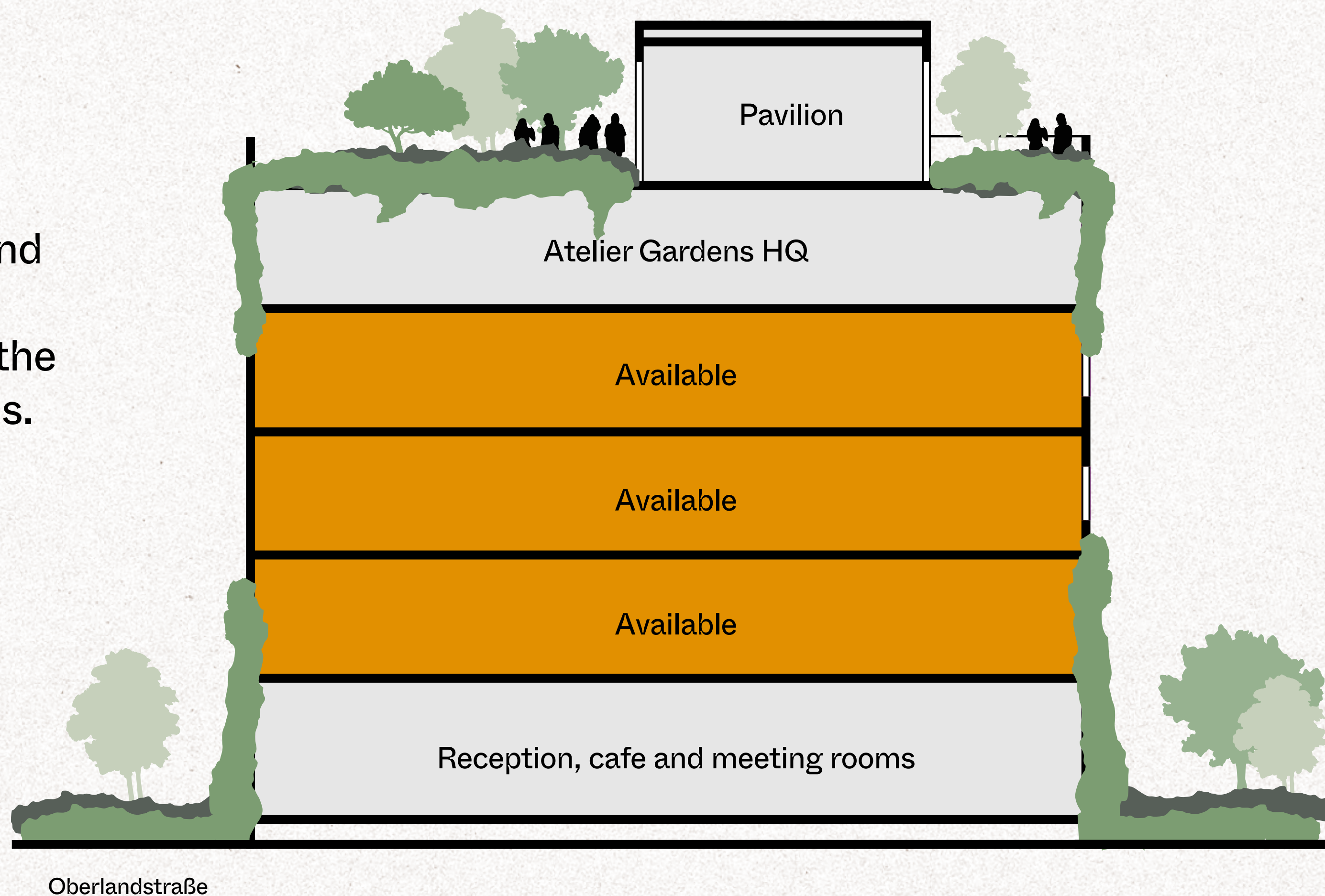
Haus 1 is a forward-thinking and revolutionary space for like-minded organisations.

Discover Haus 1

Designed by architects MVRDV, Haus 1 has been conscientiously and sustainably restored to form the latest part of the Atelier Gardens campus.

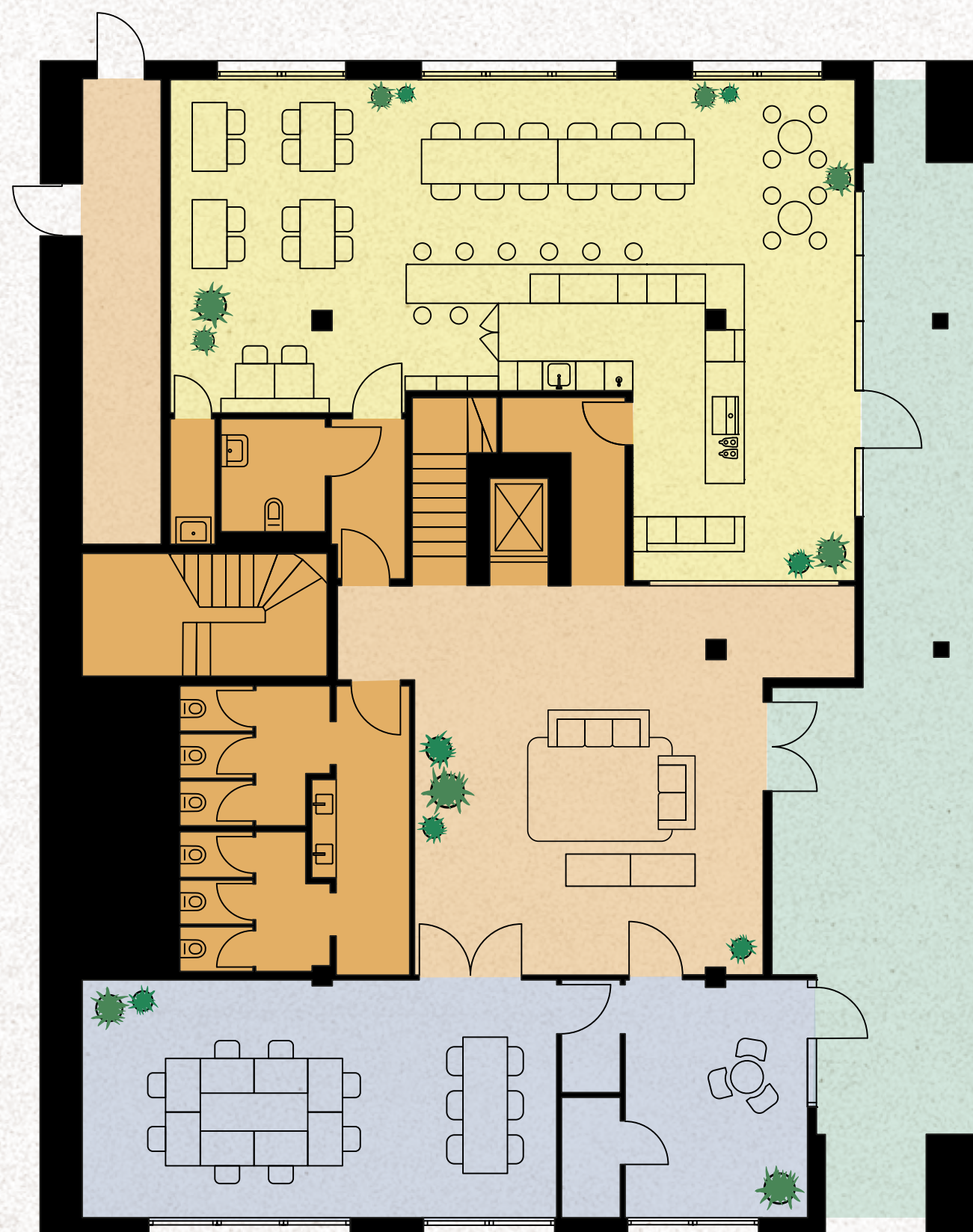
First, Second and Third floors are available as a whole to a single occupier, or on a floor-by-floor basis.

The Pavilion, cafe and meeting rooms offer flexible amenity spaces to the building and are available to book upon request.



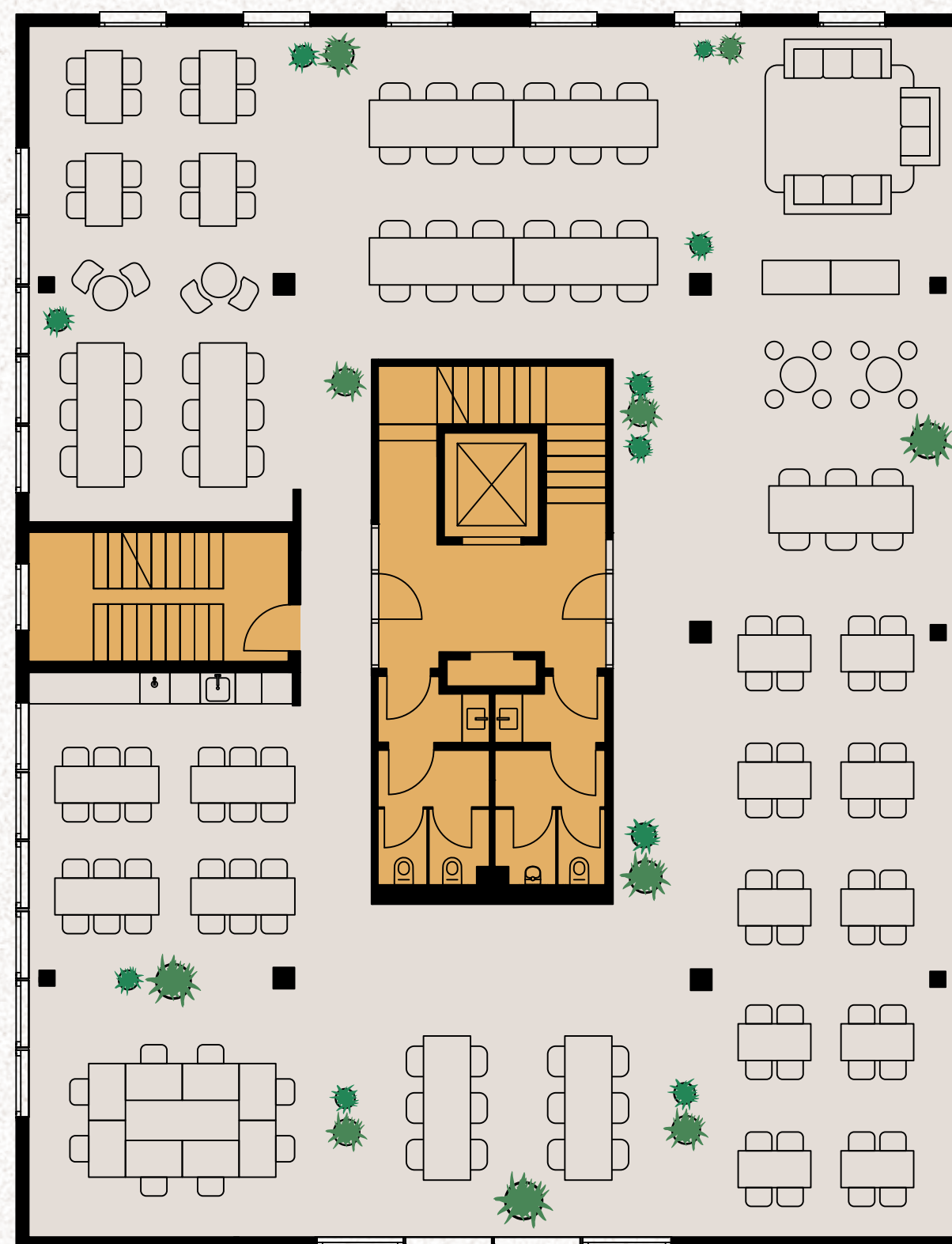
Pavilion	99 sq m
Fourth floor	357 sq m
Third floor	357 sq m
Second floor	357 sq m
First floor	357 sq m
Ground floor	221 sq m
Total	1,747 sq m

A variety of flexible workspaces to collaborate and engage.



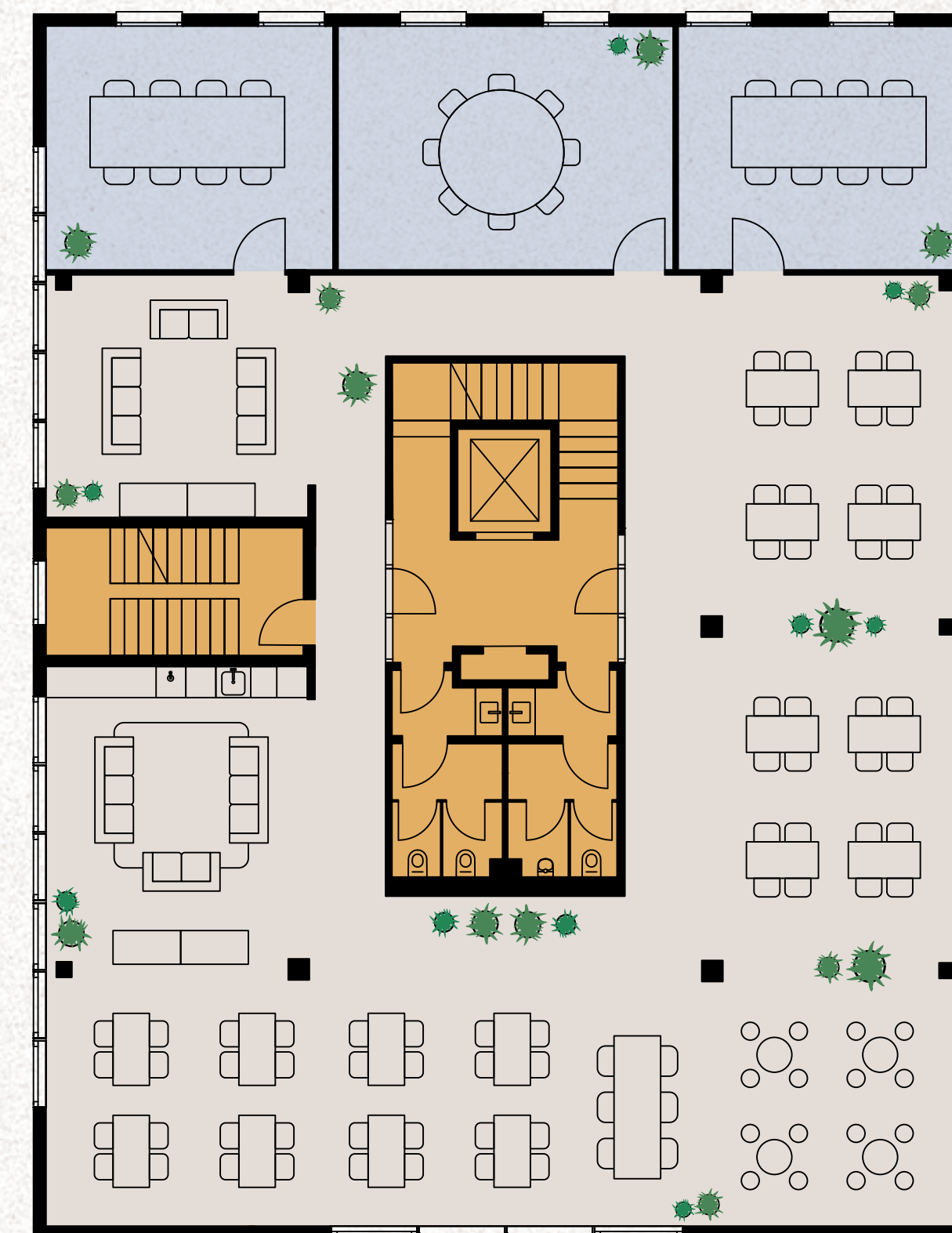
Ground floor

221 sq m



First floor

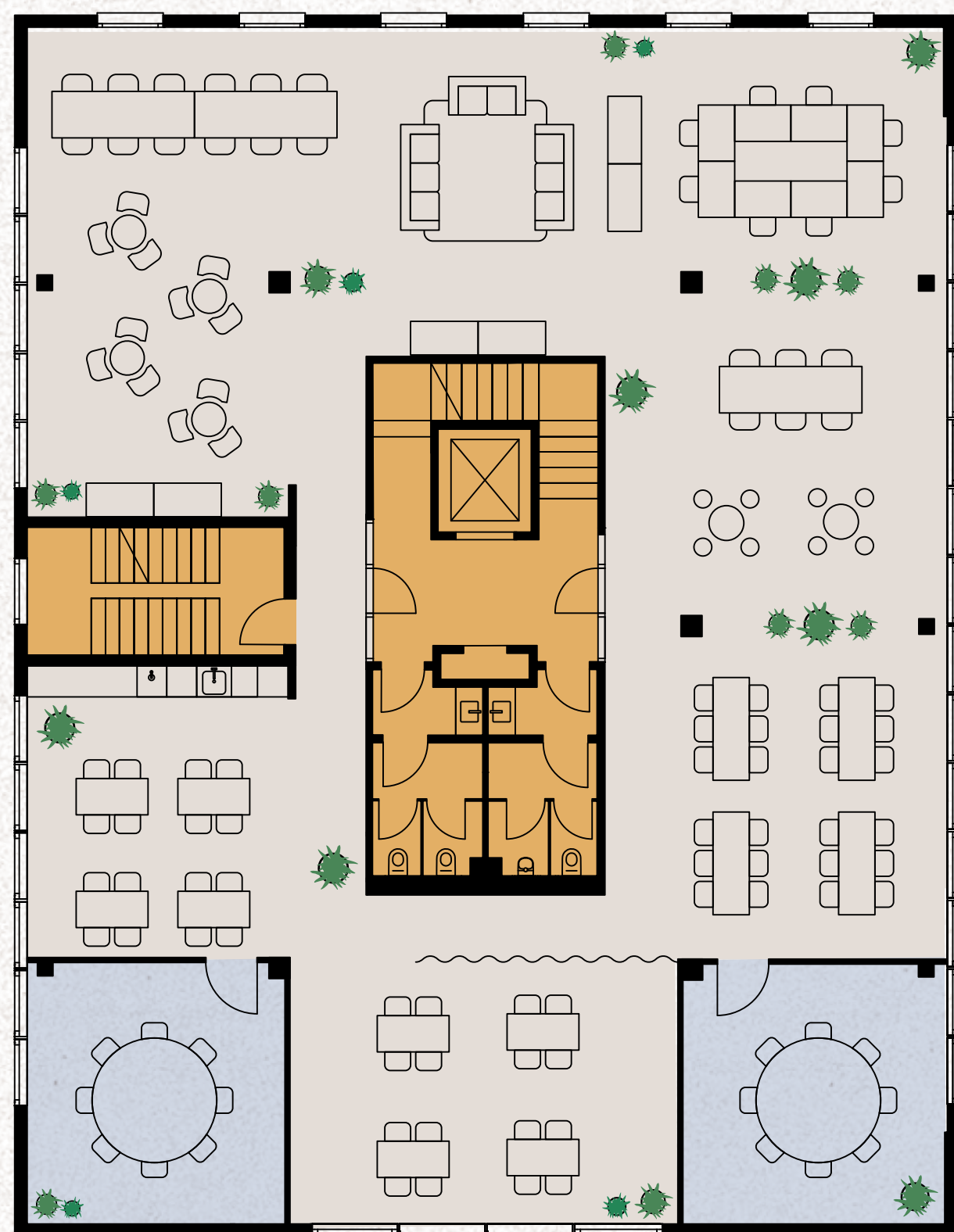
357 sq m



Second floor

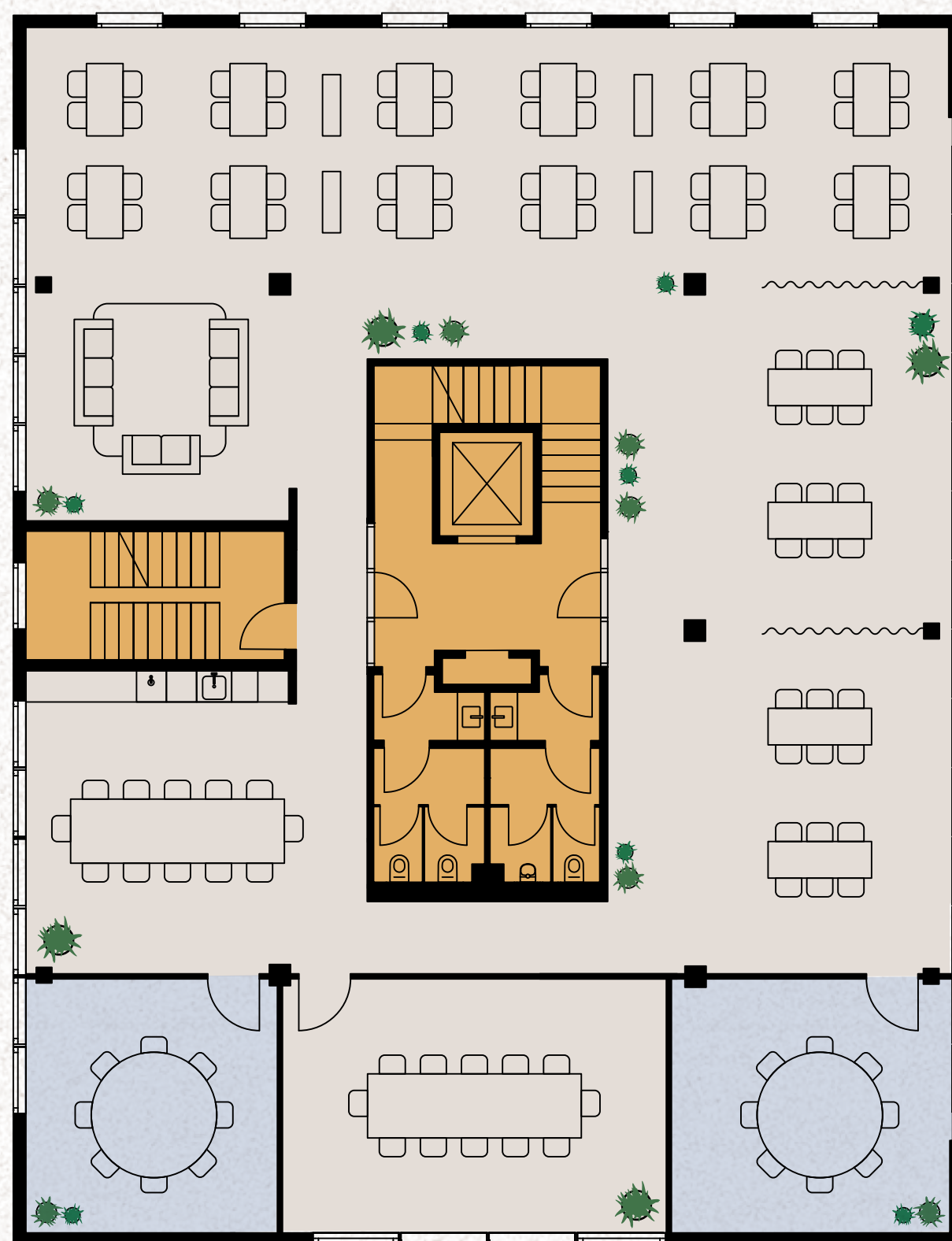
357 sq m

Workspace Meeting rooms Cafe / co-working Common parts



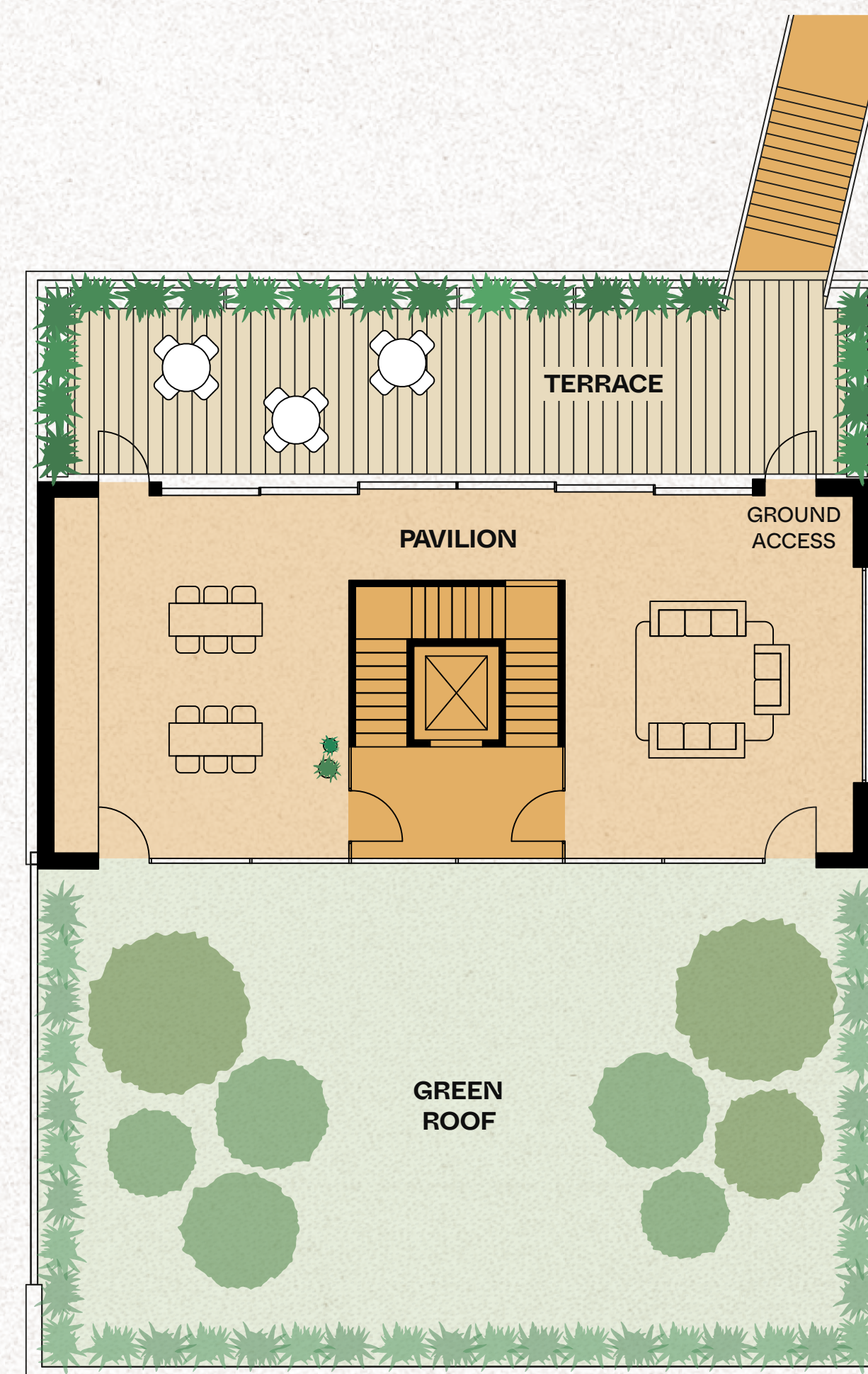
Third floor

357 sq m



Fourth floor

357 sq m



Pavilion

99 sq m

Workspace Meeting rooms Common parts

Haus 1 has been transformed to accommodate spaces to think and collaborate.



CGI SHOWING THE CAFE AND CO-WORKING SPACE

More than workspaces

Host yoga classes, drinks receptions and conference events in the Pavilion, all whilst looking out across Tempelhof airfield and the Berlin skyline.

Additional meeting rooms are available to book for any tenants of Haus 1.

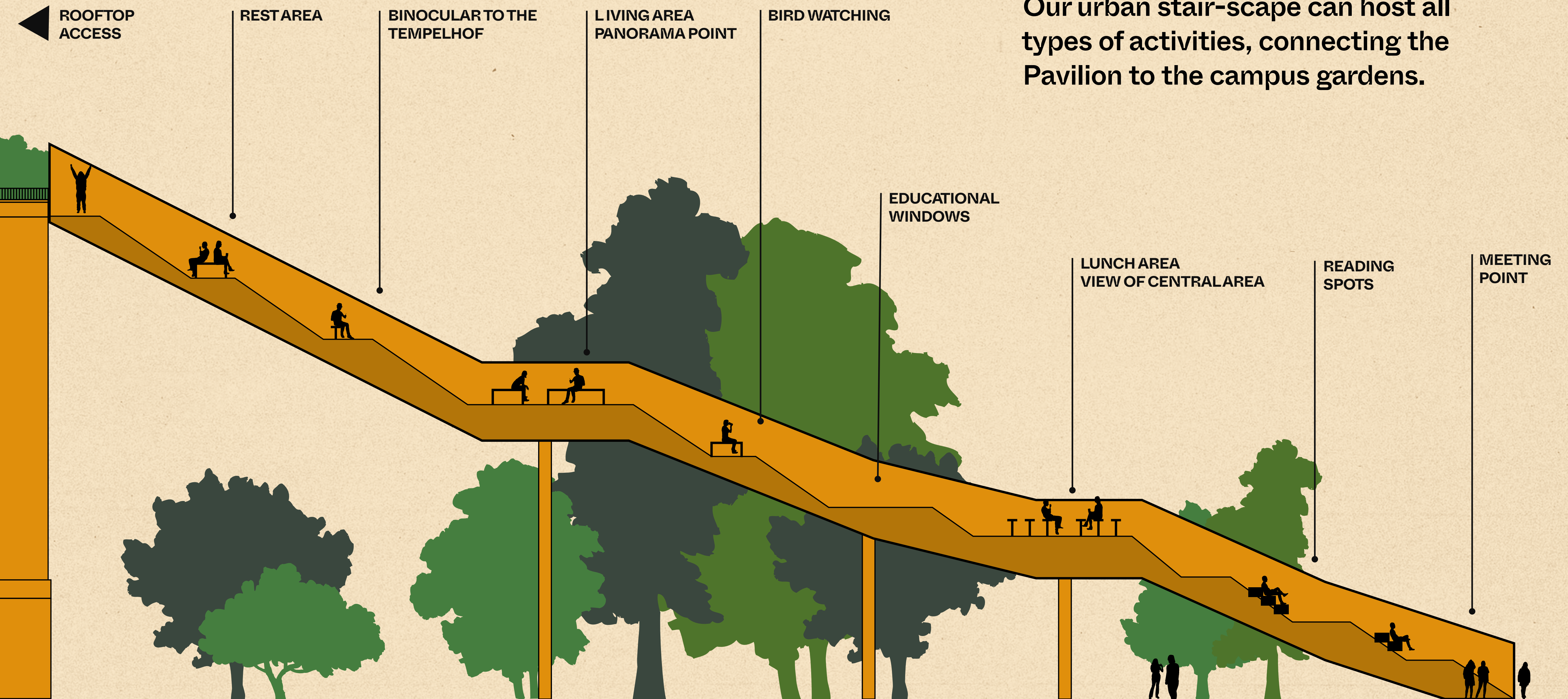


MEETING ROOM



YOGA ROOM

Our urban stair-scape can host all types of activities, connecting the Pavilion to the campus gardens.



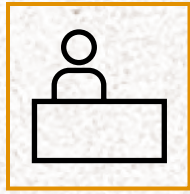
More than a staircase.

A future proof building.

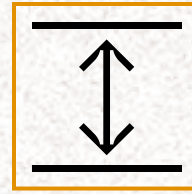


Haus 1 has been transformed into a sustainable and best-in-class workspace.

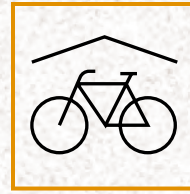
FEATURES:



Concierge service



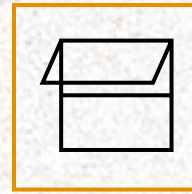
Floor to ceiling
2.83m - 3.48m



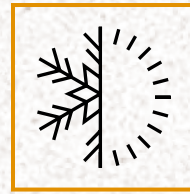
Cycle storage



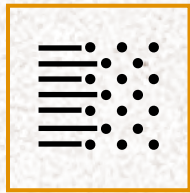
Cafe and reception



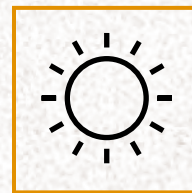
Openable windows
& access to fresh air



Low temperature
underfloor heating



1GB fibre ready



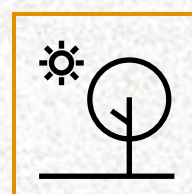
Extensive
natural daylight



Green cleaning
services



Sustainable finishes



Rooftop terrace
& pavilion

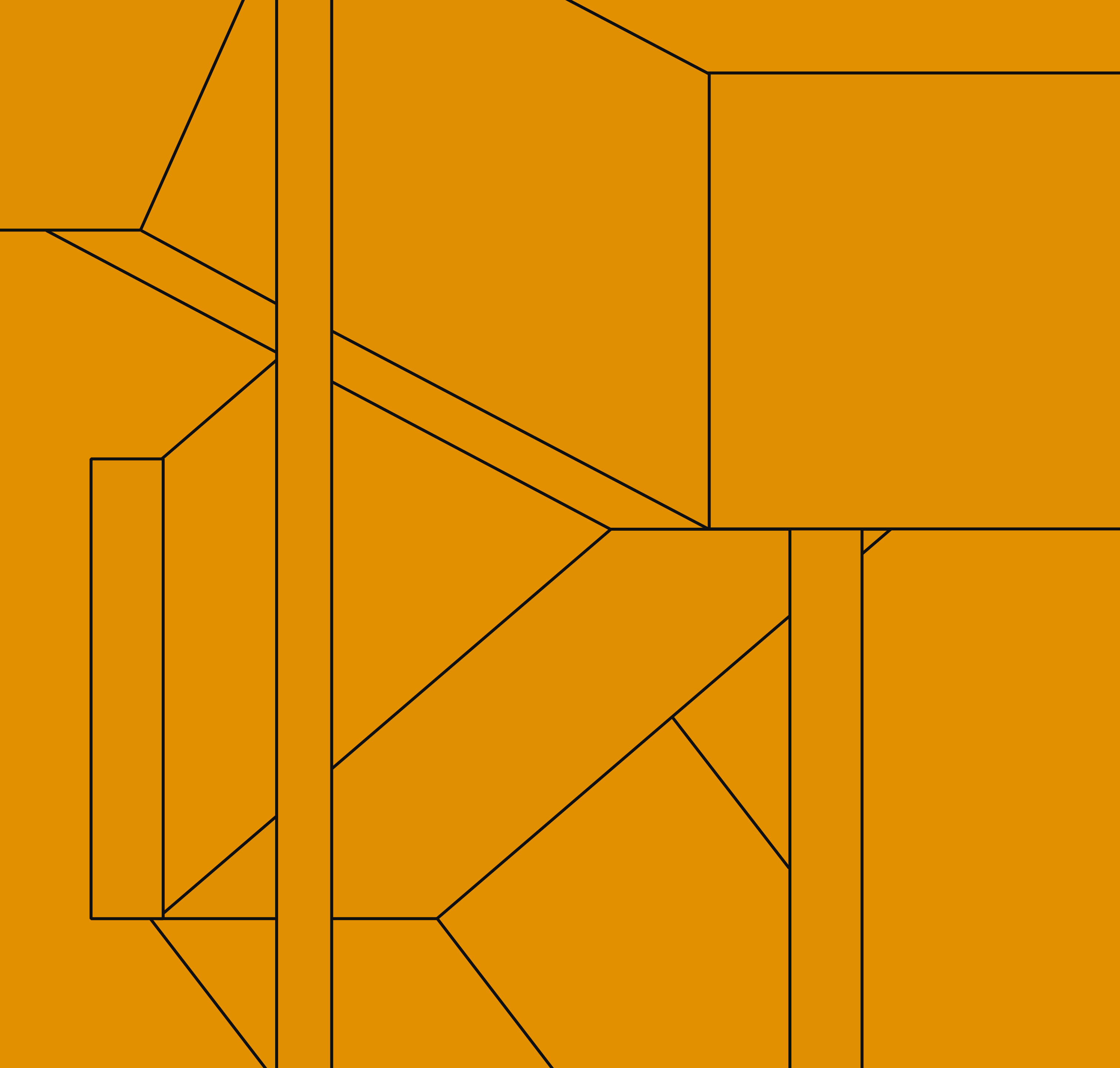


Powered by
green energy



FOYER

Location.



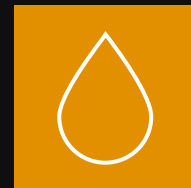
Be part of a pioneering community.

With over 12 Hauses and 5 Studios, there is always something exciting to get involved with in every corner of the campus. Examples include:

Initiatives



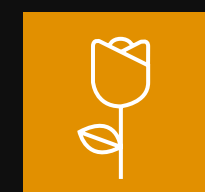
Composting of all food waste



Rainwater harvesting



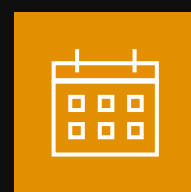
Green energy and cleaning



Pioneering landscape and greenery



Storytelling and film making

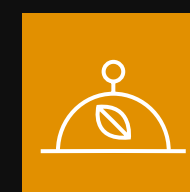


Community events throughout the year

Spaces



Studio 1



Vegan friendly restaurant



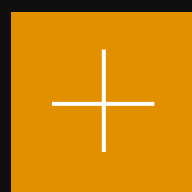
Garden



Zero-waste canteen




Screening-Room



Additional event and workspace



A photograph of a garden bed. In the foreground, there are several bright yellow Black-eyed Susans with dark brown centers. Behind them, there are tall, thin stalks of grasses and clusters of small purple flowers. The garden bed is bordered by a wooden plank. The background shows a building with a window and some trees with green and yellowing leaves.

Haus 1 is only one of a collection of inspiring spaces and campus initiatives, all helping to address the needs of human and planetary wellbeing.

A new community in Tempelhof.

Atelier Gardens sits on the southern border of Tempelhof airfield, Berlin.

2km | Herrmannplatz

2.5km | Kreuzberg (Südstern)

100m | Tempelhofer Feld



Situated next to the vibrant area of Neukölln.



Market in Schillerkiez



Tempelhof Airfield



Cafe - 21 Grams



Restaurant - La Côte



Tempelhof Airfield


Getting to Haus 1

On Bike




Hermannplatz	10 mins
Friedrichstraße	22 mins
Oranienplatz	13 mins
City West	30 mins
Hauptbahnhof	30 mins

On Foot




Hermannstrasse	16 mins
Alt-Tempelhof	22 mins
Tempelhof	27 mins

By Train



Sudkreuz	16 mins
Hauptbahnhof	30 mins
Brandenburg Airport	30 mins

By Car



Sudkreuz	6 mins
Brandenburg Airport	8 mins
Hauptbahnhof	16 mins



Oberlandstraße 26–35
12099 Berlin, Germany

info@atelier-gardens.berlin

atelier-gardens.berlin/spaces

Get in touch and
join our impact
community



ATELIER GARDENS